

DEPARTMENT

Editorial Staff

Faculty

Senior Class

Junior Class

Sophomore Class

Freshman Class

Activities

Freshman Summer Camp

Junior Summer Camp

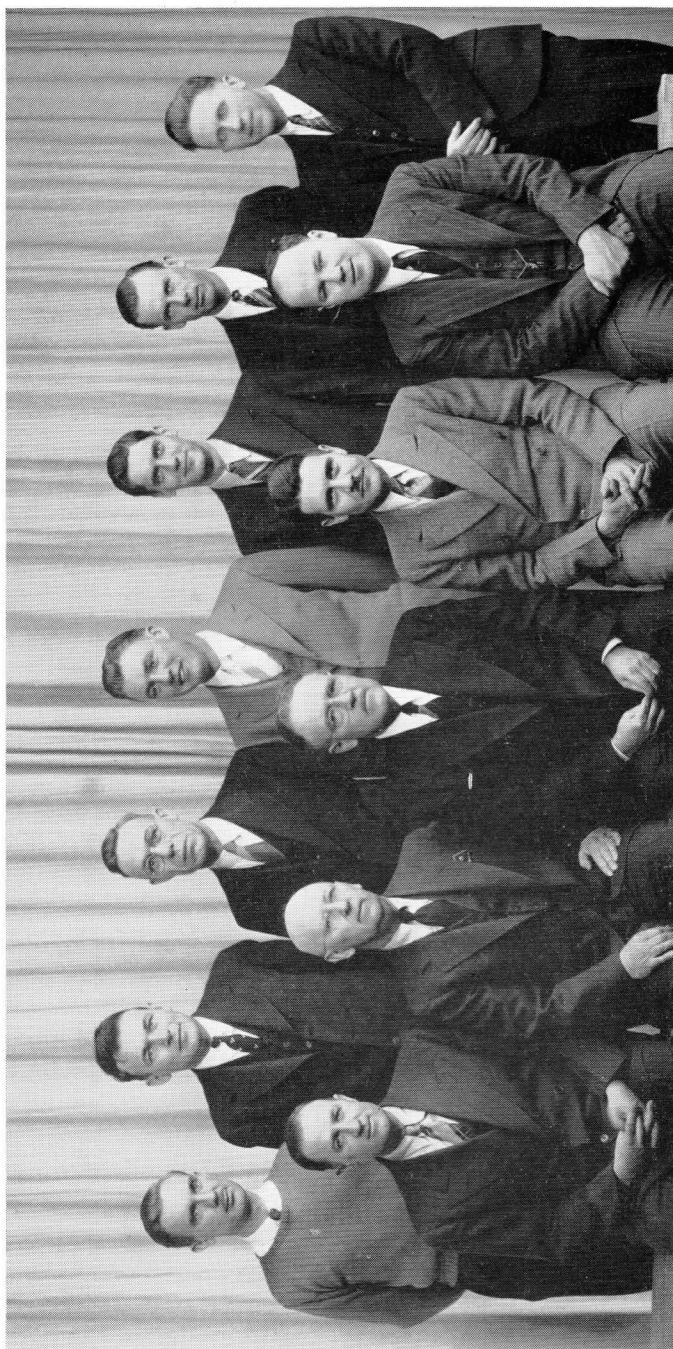
Athletes



*Standing: West, Kaden, Oelschlaeger, Barber, Hahn, Silker, Hoose, Klonick
Sitting: Rummell, Fisk, Prof. Hartman, Allen, Larson, Somberg.*

EDITORIAL STAFF—1940

Editor	John Allen
Associate Editor	Robert Rummell
Assistant Editor	Maurice Barber
Assistant Editor	George Oelschlaeger
Business Manager	Weldon Hoose
Assistant Business Manager	Oscar Hahn
Circulation Manager	Don Larson
Assistant Circulation Manager	Clarence Kaden
Advertising Manager	Carroll Fisk
Assistant Advertising Manager	Seymour Somberg
Art Editor	Ted Silker
Assistant Art Editor	Allan Klonick
Publicity Manager	Jack West
Faculty Advisor	Prof. G. B. Hartman



*Standing: Ackerman, Goodspeed, Hartman, Bagley, Melvin, Engelking, Julander.
Sitting: Ramsey, Larsen, MacDonald, Genau, McComb.*

FACULTY

Professor G. B. MacDonald

Professor Charles M. Genaux

Professor Allen W. Goodspeed

Professor J. A. Larsen

Professor George B. Hartman

Professor A. L. McComb

Professor Odell Julander

Guy R. Ramsey, Extension Forester

Truman Engelking, Asst. Extension Forester

Wayne Ackerman, Teaching Fellow

Walter Bagley, Research Fellow

J. Keith Melvin, Research Fellow



MRS. LILLIAN WALTER

MRS. WALTER came to the Forestry Department as its secretary in 1934. Since that time she has been an ever efficient and indispensable figure—one without which the Department would have been in chaos.

To mention all her duties would be an endless job. The contact she has with the forestry students is a task in itself. One of her special duties is finding misplaced papers which the absentminded professor hasn't been able to locate. The professors say, "She never fails us."

Mrs. Walters knows more about the graduates and where they're placed than they do themselves.

Attention! Iowa State Forestry Graduates! It probably won't be long until you take the matrimonial step. When that happens, remember, it is a precedent that Mrs. Walter receive a two-pound box of candy.

To Mrs. Walter we express our deepest appreciation for her untiring and successful efforts in keeping the Forestry Department in harmony.