

What's Your Radiographic Diagnosis?

by Sue Johnson*
Sandra McNeel, DVM*

HISTORY

An 18-month-old 116 pound male Bengal tiger was presented to the I.S.U. Veterinary Teaching Hospital with a complaint of anorexia, depression, chronic weight loss, and acute vomiting. The history revealed the animal's diet consisted of entire bovine carcasses.

* Ms. Johnson is a third year student in the College of Veterinary Medicine, ISU.

Dr. McNeel is an Assistant Professor of Veterinary Clinical Sciences, College of Veterinary Medicine, ISU.

Upon clinical examination dehydration, pale mucous membranes, decreased muscle mass, and an enlarged, tense abdomen were noted. Abnormal clinical pathology findings included severe anemia, neutropenia with a left shift, hypoproteinemia, hyperfibrinogenemia, hyperglycemia, hypocalcemia, hypoalbuminemia, and low alkaline phosphatase. Radiographs were taken. See figures 1 and 2 for lateral views.

CLIPPER BLADE SHARPENING

We GUARANTEE you the best clipper blade sharpening and clipper repairing you ever had. More than 40 years practical factory training. We now service the largest veterinary colleges, veterinary hospitals, and kennels in the U.S.A. Satisfied customers in 50 states and they recommend us. "They are new when we are through." Cleaned, polished and cut. Oster clippers and blades sold. Avoid C.O.D., enclose \$2.75 for each set of blades, plus postage, handling, and insurance.

<u>Blades</u>	<u>Post./hdlg./ins.</u>
1-5	\$1.60
6-12	\$1.80
15-20	\$2.00
21-30	\$2.20
31-more	\$2.50

Service Grinding and Supply Co., Inc.

Route 7
Box 7050
Hayward, Wisconsin 54843

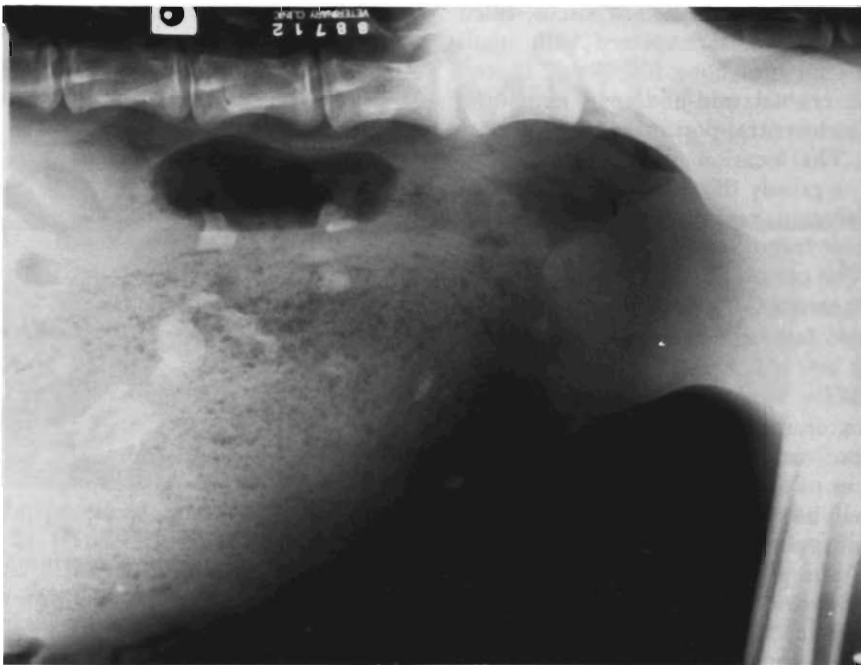


Figure 1.

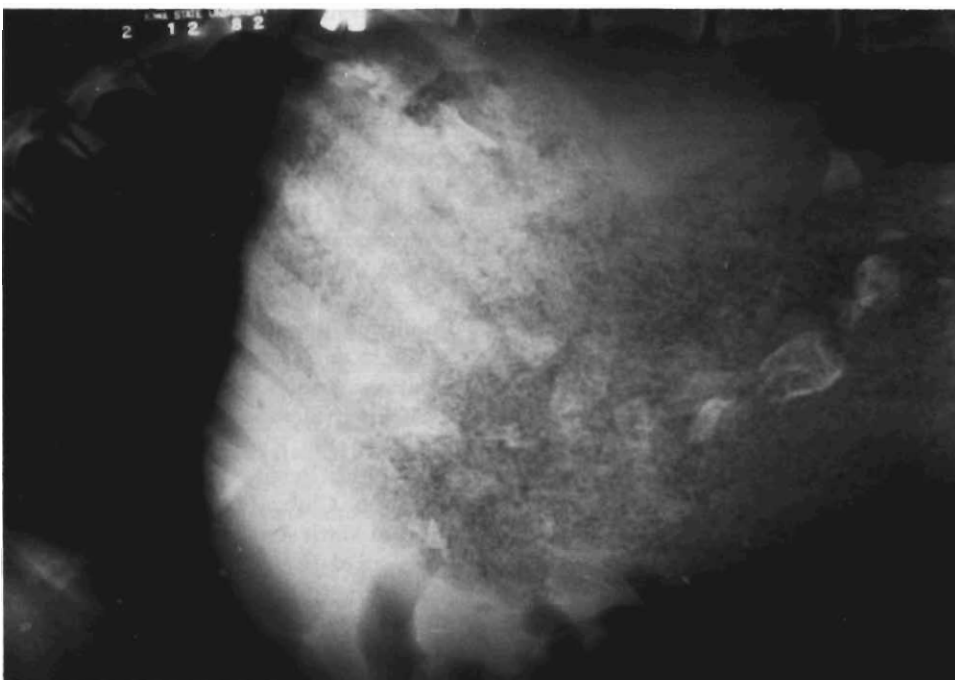


Figure 2.

RADIOGRAPHIC DIAGNOSIS

An irregularly oblong hollow viscus, filled with solid material interspersed with small amounts of air and bone fragments, is seen within the cranial mid-abdomen extending into the caudoventral portion of the peritoneal cavity. The location of the mass is suggestive of a grossly distended stomach filled with radiolucent material such as fiber or fabric, bone fragments and interspersed air bubbles. The orientation of the stomach does not suggest torsion.

COMMENT

A gastrotomy was performed the same day and confirmed a firm distended stomach. Two gallons of a well-packed mixture of hay and animal hair were removed. Supportive care of fluids, penicillin, feeding of gruel and placement of a pharyngostomy tube followed surgery; however, the tiger did not respond and died within 72 hours.

Family of Veterinarians

It seems to be a tradition in the Chapin family to graduate members of their family from ISU School of Veterinary Medicine. That "tradition", however, is to be broken this year by Gary Chapin, who will be in the University of Illinois Vet Med Class of 1982.

Dr. Glade Chapin graduated from ISU in 1927 to practice large animal medicine in Kasson, MN and has retired there. His nephews, Dr. Neal Chapin (ISU '52) and Dr. Wayne Chapin (ISU '44) (brothers), are in a five-man large animal practice in Lena, IL. His son, Russell Chapin (ISU '61), has a small animal practice in Wheaton, IL. Gary (Ill '82) is Dr. Wayne Chapin's son and his plans after graduation are indefinite. At this time, he is on a preceptorship at the practice in Lena. Keep up the good work!



Dr. Louis W. Schwarte, 85, a longtime faculty member of the Veterinary Medical Research Institute, died January 14, 1982, following a heart attack. Dr. Schwarte received a B.S. degree in 1918 and an M.S. degree in 1920 from Cornell University, Ithaca, New York. In 1928, he graduated from Iowa State University as a doctor of veterinary medicine and in 1934, received a Ph.D. degree from ISU. In 1925, he joined the faculty at ISU, becoming a professor in 1945. His research interests included, among other topics, hog cholera and poultry diseases with over 90 publications. His wife, M. "Kay" Reinicke, passed away on August 28, 1981.

Dr. Schwarte was with the Army Engineers and Armored Corps during World War I serving in France. He belonged to numerous professional and honor societies including IVMA, AVMA, AAAS, both the Iowa and New York Academy of Science, American Public Health Assoc., Conference of Research Workers in Animal Diseases, U.S. Livestock Sanitary Assoc., International Academy of Pathology, Sigma Xi, Gamma Sigma Delta, Phi Zeta, Phi Kappa Phi, Phi Lambda Upsilon, Phi Beta Kappa, and the Osborn Research Club. He had also received the Alumni Merit Award. Dr. Schwarte was also a member of the American Legion Post # 37, Rising Sun Lodge # 103, F. & A.M. Life Member (New York), and Acacia fraternity.

A memorial fund has been established to purchase equipment. Contributions may be sent to the Dean's office of the School of Veterinary Medicine at Iowa State University.