

Interdisciplinary Graduate Studies Program

Creative Component

Kaitlin Romsey

Fall 2012

Artist's Statement

Kaitlin Romsey

The pleasure I receive from creating art inspires me as an artist. I produce art to express an image in a realistic form but with my own artistic style. In each work of art, my intent is to depict compositions with lifelike details and qualities.

My biggest inspiration as an artist is living on an Iowa farm because I am surrounded by nature, specifically plants and animals. Many of my illustrations portray flowers, horses, dogs, and songbirds. Also influenced by the artists Rosa Bonheur, Maria Sibylla Merian, and Pierre Joseph Redoute, I create my own interpretation in each composition based on observation and photographs.

As an artist, I concentrate on the subject as the focal point with a limited background. The media of graphite pencil, and pen and ink allow me to draw minute detail in each illustration. As an art student at Iowa State University, I am becoming proficient with watercolor, acrylic paint, and computer illustration software. I take pride in generating accurate and precise illustrations.

Interdisciplinary Graduate Studies Program

Creative Component

Kaitlin Romsey

Fall 2012

Photographs of the Romsey Graduate Art Exhibition

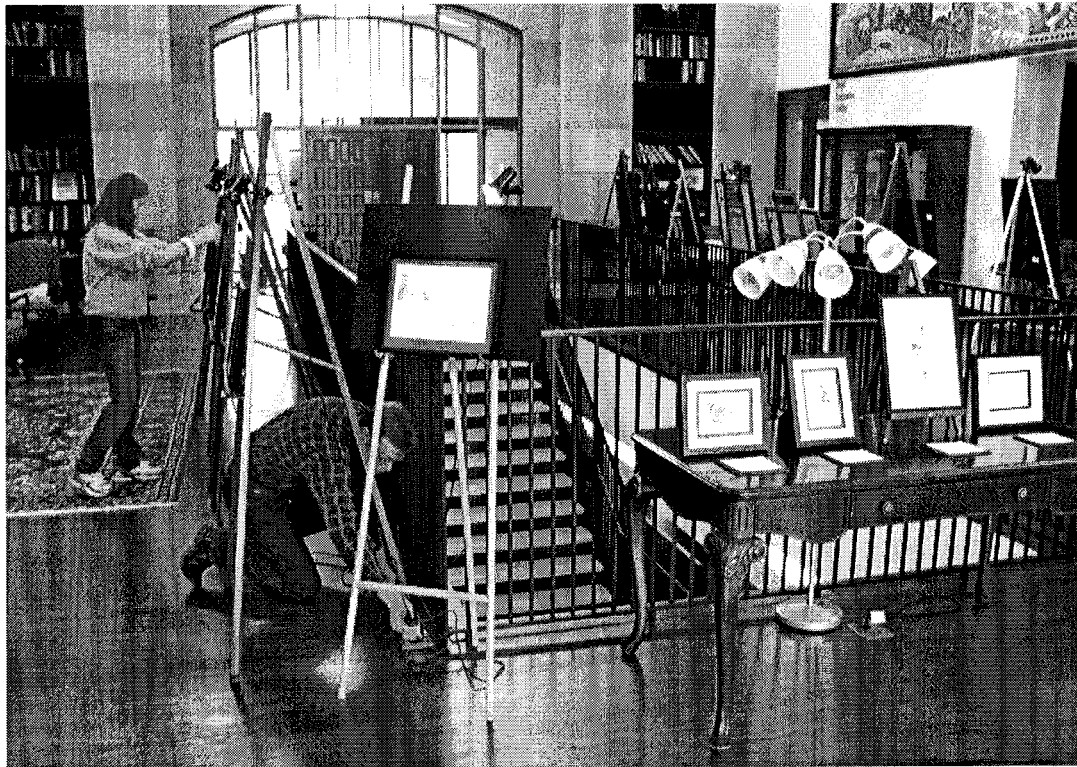
ISU Alumni Center

Sunday, November 4, 2012 from 1:00 – 4:00 PM

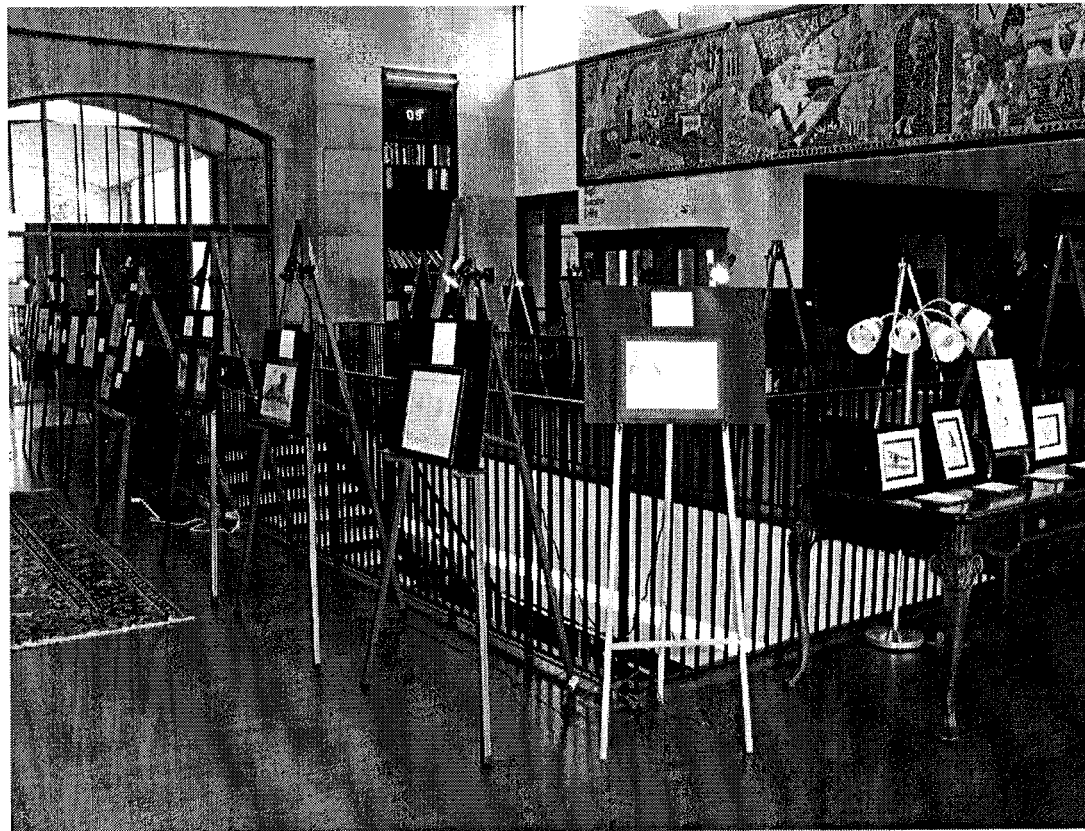
Kaitlin Romsey

Preparations and set-up

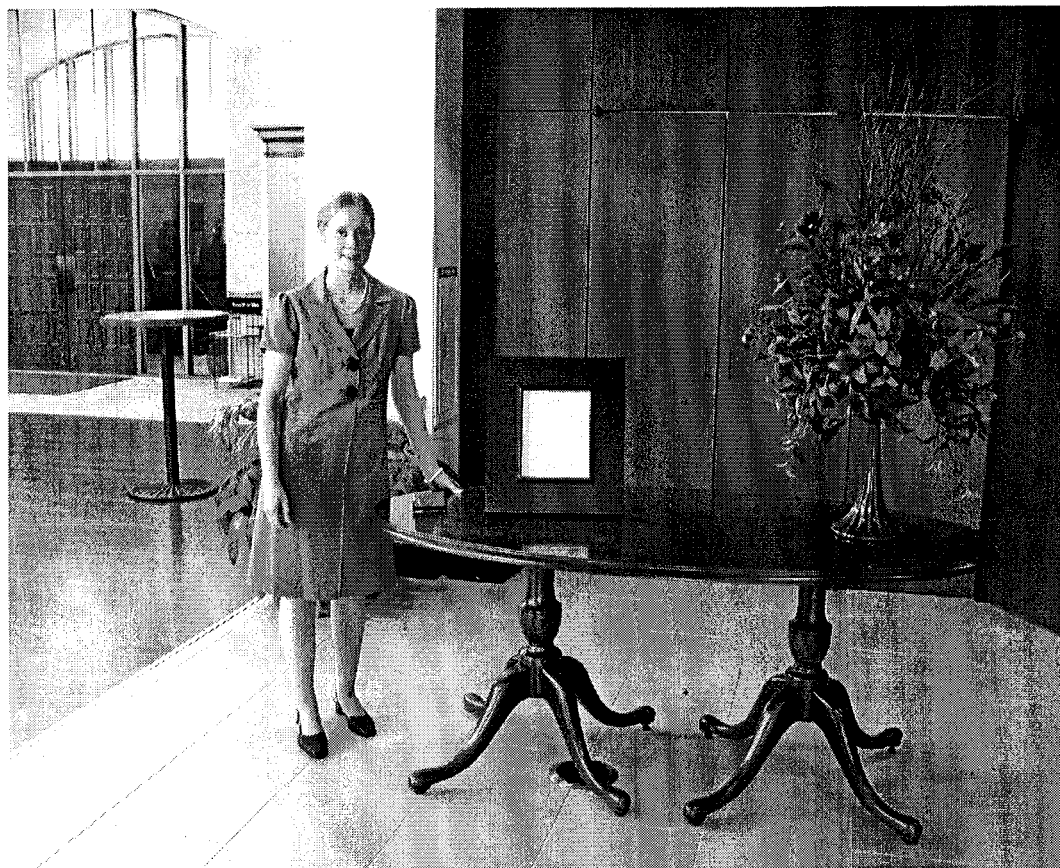




Arrangement of the room, and the placement of the illustrations in the space





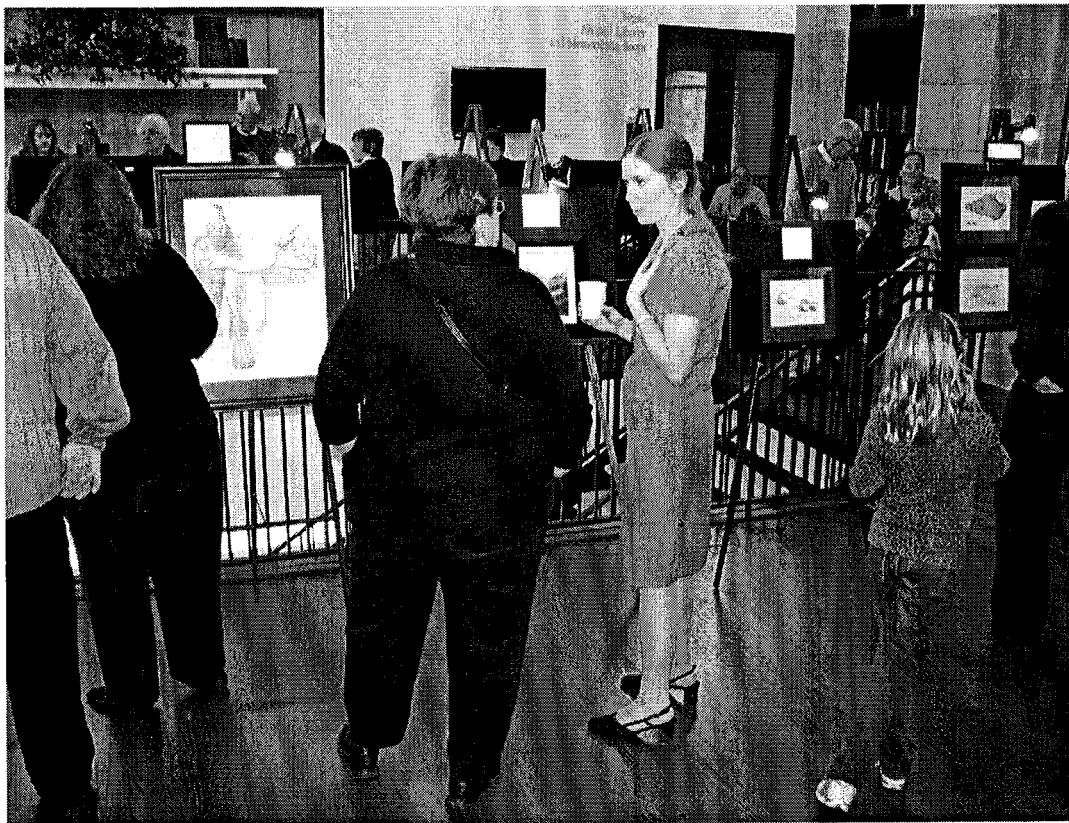


Hors d'oeuvres and refreshments

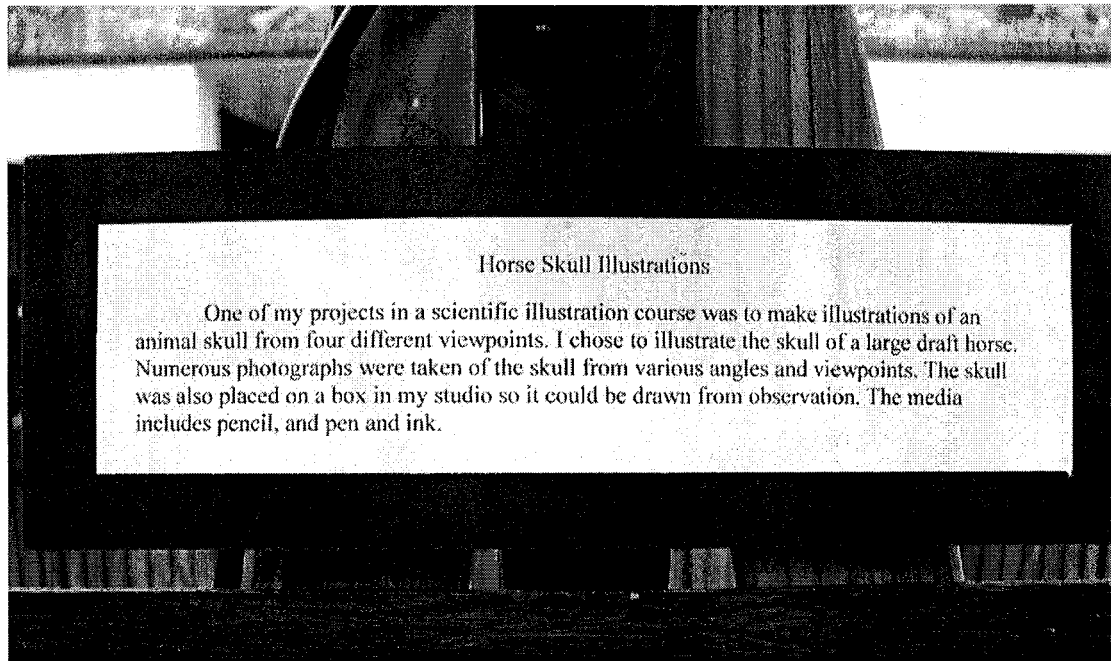


Guests

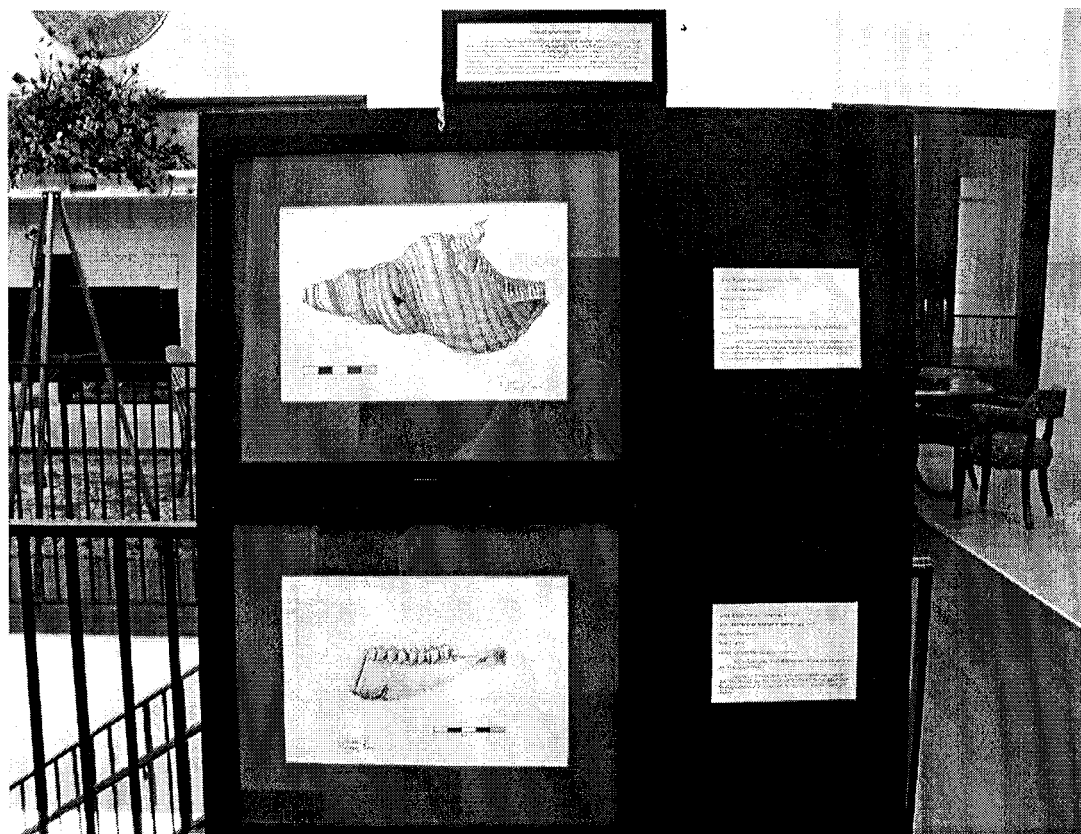
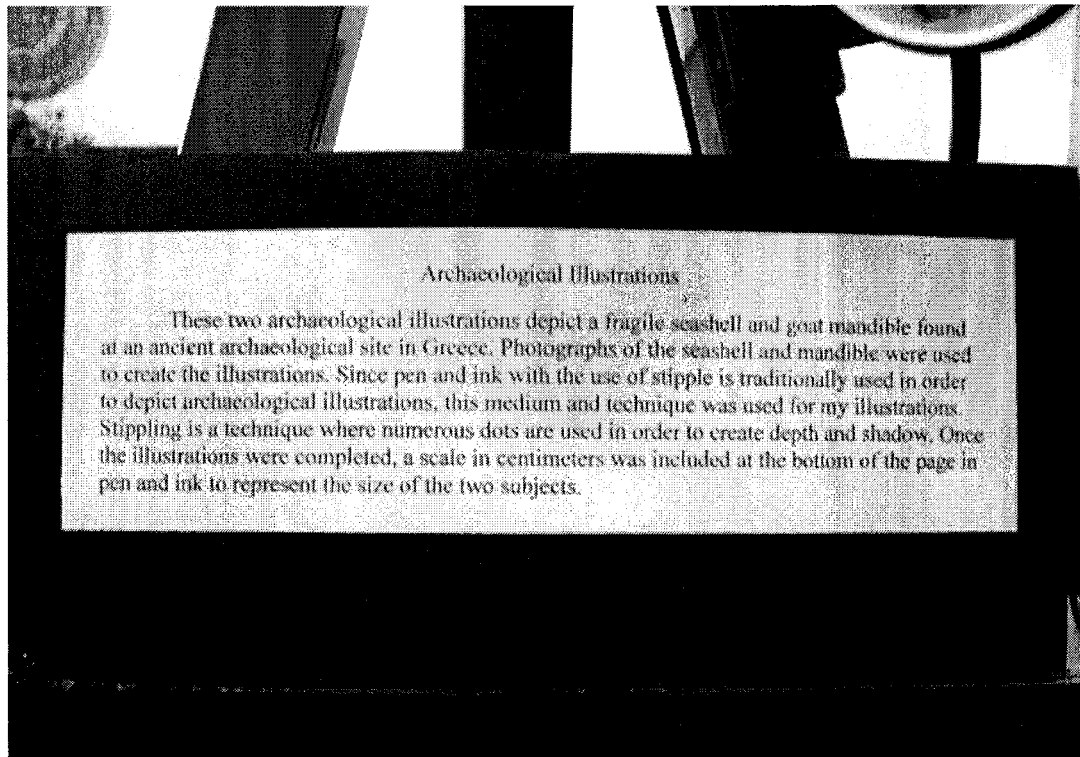




Illustrations with wall texts







Computer Illustrations

These three illustrations were created for a computer illustration course I completed in the spring of 2011. Adobe Illustrator and Adobe Photoshop were the computer programs used to create the illustrations.



Arrangement of illustrations by subject

