

THE NORTH AMERICAN REGIONAL CLIMATE CHANGE ASSESSMENT PROGRAM

Overview of Phase I Results

BY LINDA O. MEARNS, RAY ARRITT, SÉBASTIEN BINER, MELISSA S. BUKOVSKY, SETH MCGINNIS,
STEPHAN SAIN, DANIEL CAYA, JAMES CORREIA JR., DAVE FLORY, WILLIAM GUTOWSKI, EUGENE S. TAKLE,
RICHARD JONES, RUBY LEUNG, WILFRAN MOUFOUMA-OKIA, LARRY MCDANIEL, ANA M. B. NUNES,
YUN QIAN, JOHN ROADS, LISA SLOAN, AND MARK SNYDER

This document is a supplement to “The North American Regional Climate Change Assessment Program: Overview of Phase I Results,” by Linda O. Mearns, Ray Arritt, Sébastien Biner, Melissa S. Bukovsky, Seth McGinnis, Stephan Sain, Daniel Caya, James Correia Jr., Dave Flory, William Gutowski, Eugene S. Takle, Richard Jones, Ruby Leung, Wilfran Moufouma-Okia, Larry McDaniel, Ana M. B. Nunes, Yun Qian, John Roads, Lisa Sloan, and Mark Snyder (*Bull. Amer. Meteor. Soc.*, **93**, 1337–1362) • ©2012 American Meteorological Society • Corresponding author: Linda O. Mearns, National Center for Atmospheric Research, P.O. Box 3000, Boulder, CO 80307 • E-mail: lindam@ucar.edu • DOI:10.1175/BAMS-D-11-00223.1

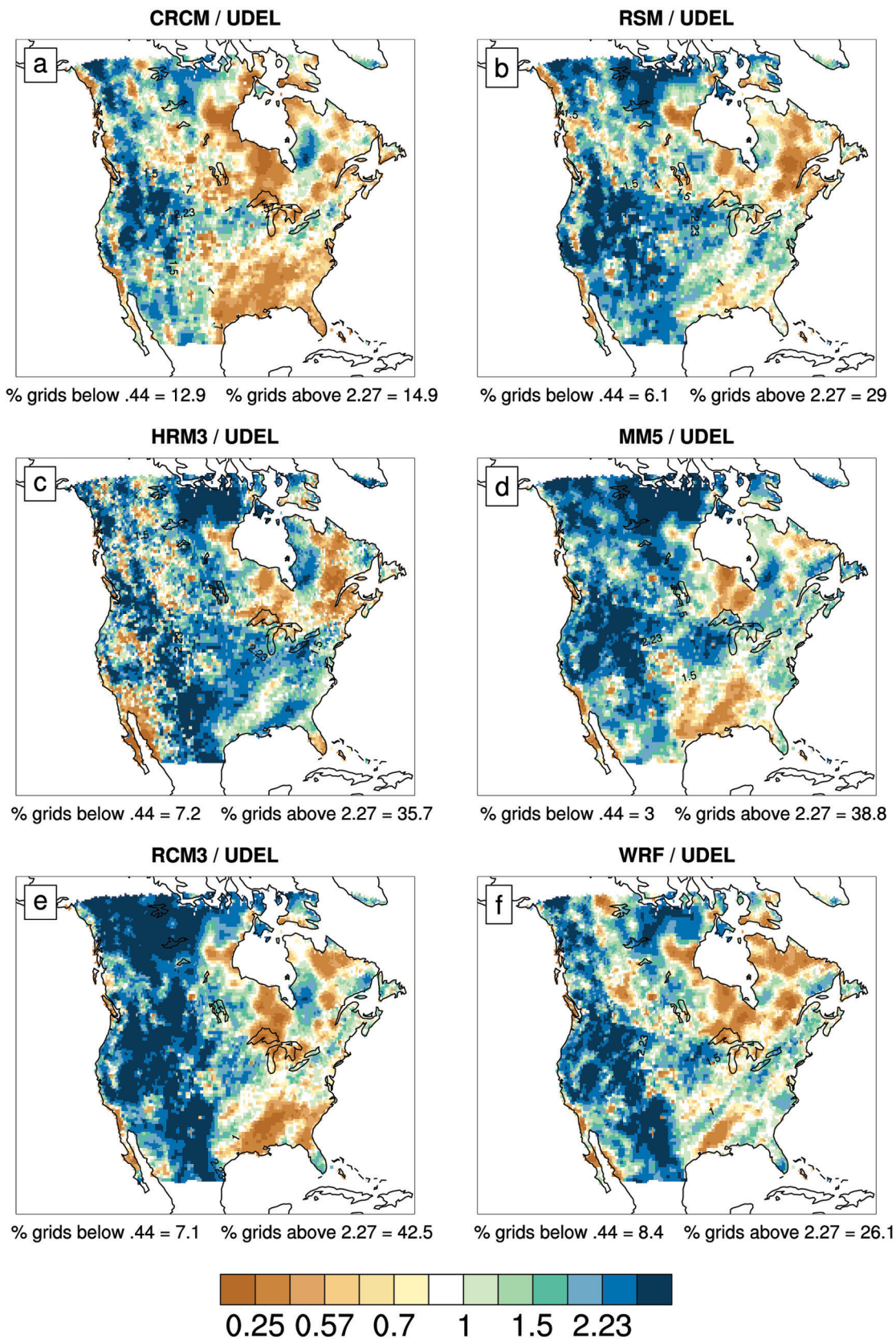


FIG. S1. The ratio of model to observed interannual variance of winter seasonal precipitation for the six regional models. Values of the F statistic at the 0.0275 and 0.975 levels are 0.44 and 2.27, respectively. Percentage of grids below (above) these critical values is indicated below each panel.

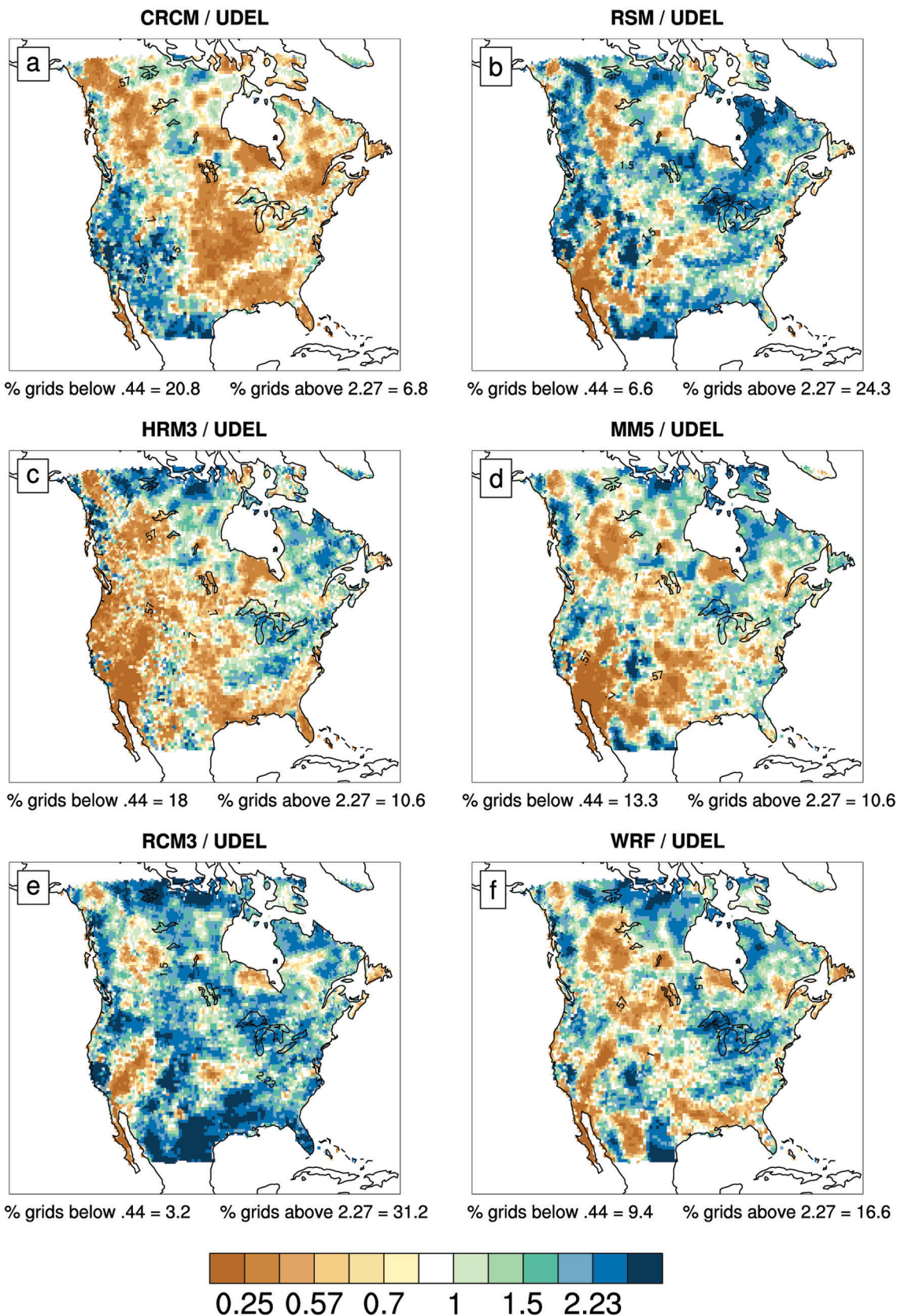


FIG. S2. The ratio of model to observed interannual variance of summer seasonal precipitation for the six regional models. Values of the F statistic at the 0.0275 level is 0.44 and 2.27 for the 0.975 level. Percentage of grids below (above) these critical values is indicated below each panel.

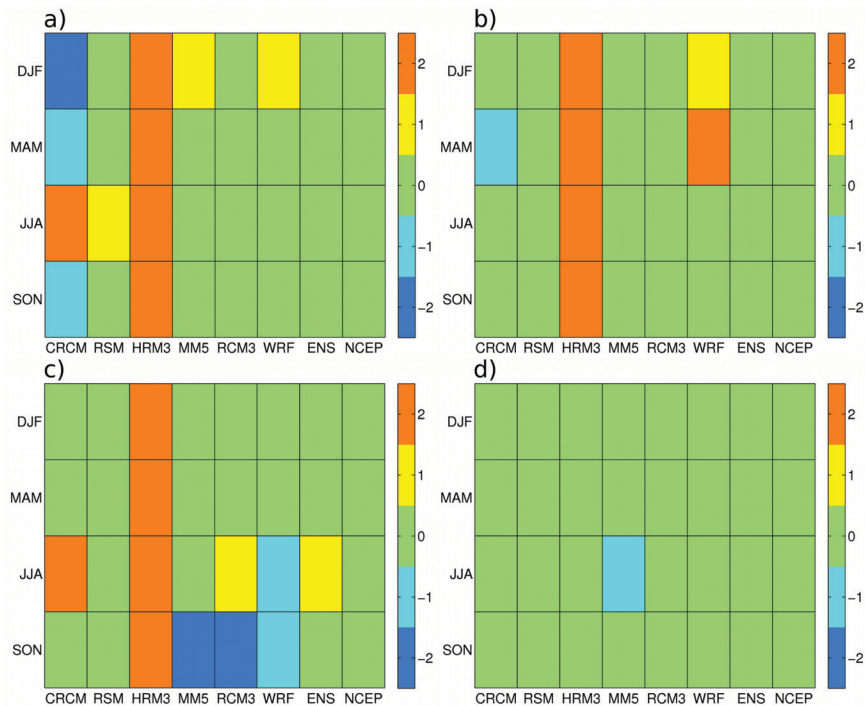


FIG. S3. Bias block diagrams based on comparative quartiles of temperature for the six models, full ensemble (denoted as ENS), and NCEP compared to those of observations for the four regions: (a) Southern California, (b) Great Plains, (c) south-central United States, and (d) the Atlantic coast.

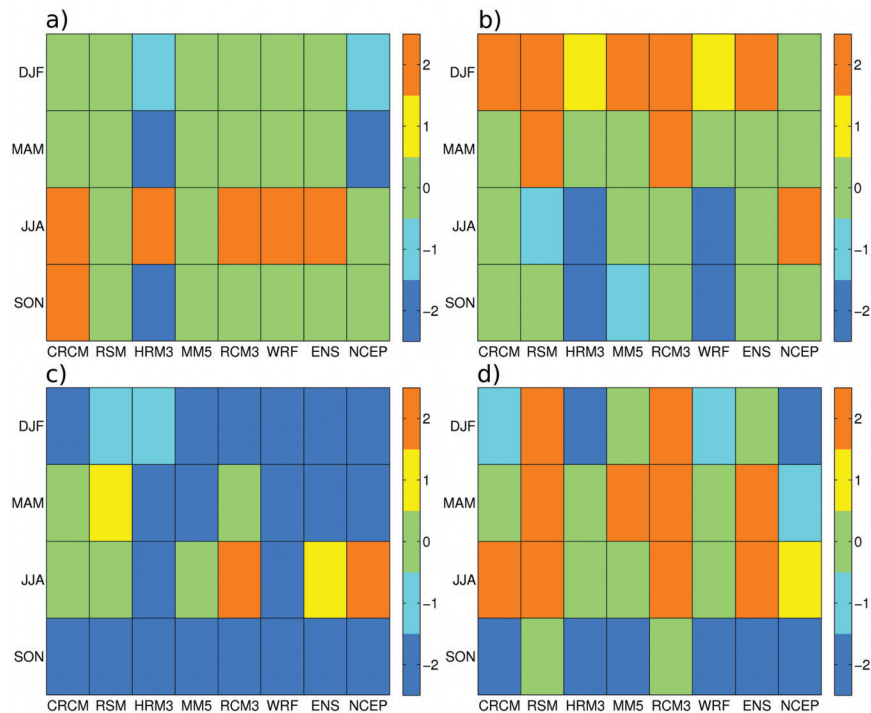


FIG. S4. Bias block diagrams based on quartiles of precipitation for the six models, full ensemble (denoted as ENS), and NCEP compared to those of observations for the four regions: (a) Southern California, (b) Great Plains, (c) south-central United States, and (d) the Atlantic coast

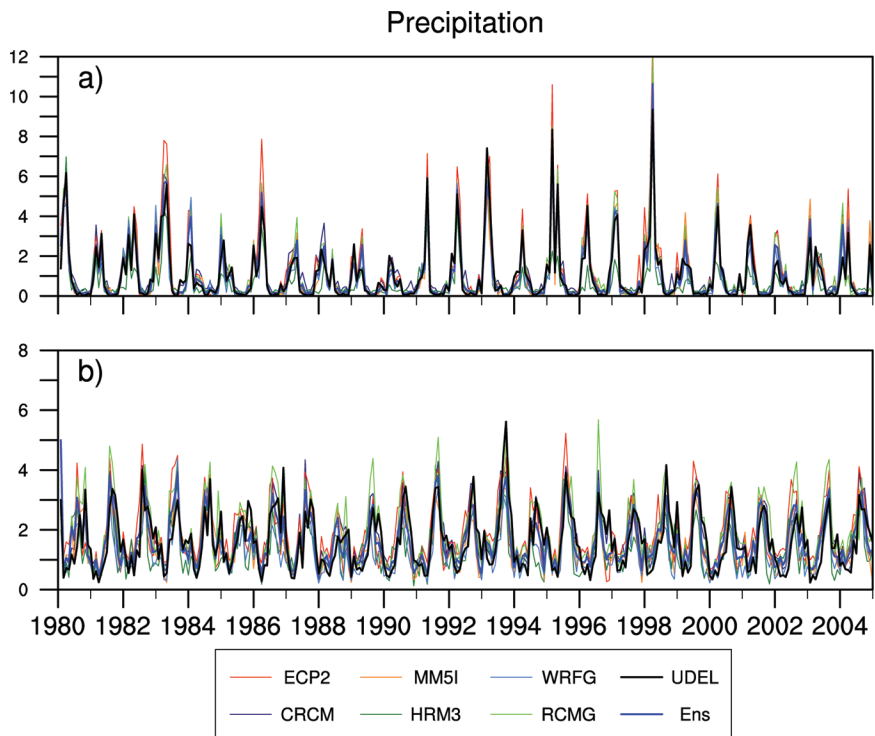


FIG. S5. Time series of monthly average precipitation (mm day^{-1}) for the six RCMs, the full ensemble, and UDEL observations: (a) Southern California and (b) the Great Plains. The label ECP2 refers to the RSM.