



2950 Niles Road, St. Joseph, MI 49085-9659, USA  
269.429.0300 fax 269.429.3852 hq@asabe.org www.asabe.org

*An ASABE Meeting Presentation*

DOI: <https://doi.org/10.13031/aim.201700378>

Paper Number: 1700378

## ***Thermal environment assessment and controller performance comparison for a wean-finish barn***

***Brett C. Ramirez<sup>1</sup>, Steven J. Hoff<sup>1</sup>, and Jay D. Harmon<sup>1</sup>***

***<sup>1</sup>Department of Agricultural and Biosystems Engineering, Iowa State University, Ames, IA, 50011, USA***

**Written for presentation at the  
2017 ASABE Annual International Meeting**

**Sponsored by ASABE**

**Spokane, Washington**

**July 16-19, 2017**

**ABSTRACT.** *The thermal environment (TE) inside swine facilities has a substantial impact on animal growth performance and facility energy usage; therefore, proper control and measurement are required to maintain the optimal TE that maximizes feed efficiency and consumes minimal resources. An inexpensive and novel network of 44 thermal environment sensor arrays (TESAs) capable of capturing the spatial and temporal distribution of the TE were deployed in August 2016 inside a two-room (designated as North; N and South; S), wean-finish barn (~1200 hd and 22 TESAs per room) and placed about 1.8 m above the slatted floor. All TESAs simultaneously measured and averaged 20 samples of dry-bulb temperature, back globe temperature, airspeed, and relative humidity at 1 min intervals. The objectives of this research were to: (1) summarize the TE observations from this monitoring period and (2) develop some preliminary analysis methods to quantitatively compare the TE in each room. Each room of the fully mechanically, power-tunnel ventilated facility featured independent TE control (i.e., fan, heater, inlet, and tunnel curtain operation) by a unique ventilation controller. A set point uniformity coefficient ( $\gamma_{SP}$ ; binned by ambient temperature;  $t_a$ ) was used to assess ventilation controller performance and a two-sample (from random subsampling of  $t_a$  bins) t-test was used to test if  $\gamma_{SP}$  in each room was statistically different. Results showed a statistically significant difference between N and S room  $\gamma_{SP}$  for  $t_a$  bins  $<8^\circ\text{C}$  ( $p < 0.01$ ;  $p < 0.01$ ;  $p < 0.01$ ). No statistically significant difference was found between N and S room  $\gamma_{SP}$  for  $t_a$  bins  $>8^\circ\text{C}$  ( $p = 0.26$ ;  $p = 0.07$ ;  $p = 0.73$ ;  $p = 0.31$ ). This is a preliminary and novel approach to assessing ventilation controller performance and future approaches will need incorporate all parameters of the TE.*

**Keywords.** *Facility, Sensor array, Swine, Ventilation*

### **Introduction**

The thermal environment (TE) inside swine facilities has a substantial impact on animal growth performance and facility energy usage; therefore, proper control and measurement are required to maintain the optimal TE that maximizes feed efficiency and consumes minimal resources. The TE describes the parameters (i.e., dry-bulb temperature;  $t_{db}$ , relative humidity, airspeed, and mean radiant temperature) that impact the sensible and latent modes of heat exchange between a pig and its surroundings (ASHRAE, 2013; DeShazer, 2009). The effects of  $t_{db}$  have been well-assessed (Mount, 1968) and is typically the only parameters used describe and control the TE. Hence, an accurate evaluation of the TE requires measurement of all four TE parameters.

The TE inside a swine facility is often a function of management decisions, integrity and materials in the building

The authors are solely responsible for the content of this meeting presentation. The presentation does not necessarily reflect the official position of the American Society of Agricultural and Biological Engineers (ASABE), and its printing and distribution does not constitute an endorsement of views which may be expressed. Meeting presentations are not subject to the formal peer review process by ASABE editorial committees; therefore, they are not to be presented as refereed publications. Publish your paper in our journal after successfully completing the peer review process. See [www.asabe.org/JournalSubmission](http://www.asabe.org/JournalSubmission) for details. Citation of this work should state that it is from an ASABE meeting paper. EXAMPLE: Author's Last Name, Initials. 2017. Title of presentation. ASABE Paper No. ---. St. Joseph, MI: ASABE. For information about securing permission to reprint or reproduce a meeting presentation, please contact ASABE at [www.asabe.org/permissions](http://www.asabe.org/permissions) (2950 Niles Road, St. Joseph, MI 49085-9659 USA).

envelope, and the ventilation controller. Management dictates the settings programmed into the ventilation controller, which is a standalone control system capable of managing fans, inlets, curtains, furnaces, sprinklers, cool cells, etc. The performance of these ventilation controllers is poorly defined and no quantitative method for determining the impact of the how the ventilation controllers functions and its impact on the animals.

The goal of this study to establish some preliminary methods on quantitatively assessing the performance of a ventilation controller. A quantitative assessment will provide the necessary information for improving control decisions for a given facility based on data and identify areas for improvement for existing ventilation controllers. The objectives of this research were to: (1) summarize the TE observations from this monitoring period and (2) develop some preliminary analysis methods to quantitatively compare the TE in each room.

## Site Description

As part of a larger study, monitoring was conducted at a deep-pit, wean-finish swine facility located within 8.9 km of Pocahontas, IA, USA (42°44'04.2"N, 94°40'18.4"W) from August 8<sup>th</sup>, 2016 to January 25<sup>th</sup>, 2017. The length of the building was orientated along the East-West axis. The facility featured two side-by-side rooms (designated as North; N and South; S rooms), with room dimensions (L × W × H) of 61 m × 15.2 m × 2.54 m and each housing ~1200 hd in 12 pens. Each room featured independent TE control (i.e., fan, heater, inlet, and tunnel curtain operation) by a unique ventilation controller. The negative pressure ventilation system was fully mechanical with power (i.e., fresh air distributed through ceiling inlets in cold to mild conditions) to tunnel (i.e., fresh air pulled the length of the building from the tunnel curtain at the one end wall to fans at the other end wall in hot conditions) operation. Ambient temperature ( $t_a$ ) and RH were recorded at the facility by the ventilation controller every 15 min.

## Instrumentation

An individual Thermal Environment Sensor Array (TESA) was developed to measure dry-bulb temperature, relative humidity, airspeed (Gao, Ramirez, & Hoff, 2016), and estimate mean radiant temperature from the globe temperature of a black globe thermometer (Ramirez, Gao, & Hoff, 2016). Sensor signals from a TESA were connected via a 3.05 m long, nine-conductor wire to screw terminals mounted on a data acquisition custom printed circuit board, both secured in a weatherproof housing. Exactly 22 TESAs were suspended about 1.8 m above the fully-slatted concrete floor in each room. A text file containing the comma-separated data from all 44 TESAs at a 1 min sampling interval was created and saved every hour on removable flash memory.

## Data Analysis

Text files were imported into Matlab (R2017a, The Mathworks, Inc., Natick, Massachusetts, USA) and preprocessed to remove garbled text and verify measured values. A non-weighted uniformity coefficient ( $\gamma_x$ ) for a given TE parameter (x) was used to describe the spatial uniformity of the TE throughout the N and S rooms. At least 16 of the 22 measurements were used in the computation of  $\gamma$  for a given time point. In addition, a set point uniformity coefficient ( $\gamma_{SP}$ ) was used to describe the spatial uniformity of  $t_{db}$  with respect to the desired  $t_{db}$  set point programmed on the controllers in the N and S rooms. Total (i.e., sum) uniformity for  $\gamma_x$  and  $\gamma_{SP}$  was determined for each room. Summary statistics for  $\gamma_{SP}$  for nine  $t_a$  bins ranging from  $<8^\circ\text{C}$  by  $8^\circ\text{C}$  to  $>32^\circ\text{C}$  were calculated. For each  $t_a$  bin, 60 random sub-samples were taken to perform a two-sample  $t$ -test to test null hypothesis at the 5% significance level that  $\gamma_{SP}$  comes from normal distributions with equal means and equal but unknown variance.

## Results and Discussion

Total non-weighted uniformity for N room:  $\gamma_{tdb} = 1.6E5$ ; S room:  $\gamma_{tdb} = 1.5E5$  and N room:  $\gamma_{RH} = 9.5E4$ ; S room:  $\gamma_{RH} = 8.7E4$ . The N room had greater total non-weighted uniformity than the S room; hence, this may implicate improved performance. A desired  $\gamma_{SP} = 0.8$  was established (fig. 1). The practical interpretation of this is as follows, for example, 22 TESAs with  $t_{db}$  measurements within  $\pm 1^\circ\text{C}$  of the set point yield  $\gamma_{SP} = 0.79$ . Alternatively, 11 TESAs with  $t_{db}$  measurements within  $\pm 2^\circ\text{C}$  of the set point **and** 11 TESAs with  $t_{db}$  measurements equal to the set point yield  $\gamma_{SP} = 0.79$ . There are many different combinations of the number of  $t_{db}$  measurements and the degree in which those  $t_{db}$  measurements are different than the set point to generate  $\gamma_{SP} \geq 0.8$ . In essence,  $\gamma_{SP}$  is an index that quantifies the effect of the spatial distribution and severity of the difference from set point. There are several obvious trends, such as, when  $t_a$  was greater than set point in mid to late September,  $\gamma_{SP}$  for both the N and S rooms decreased substantially. This was most likely attributed to the switch from power to tunnel. Further, rapid decreases in  $\gamma_{SP}$  are observed when  $t_a$  quickly decreased as well, causing the controller to lag behind to sudden change in  $t_a$ .

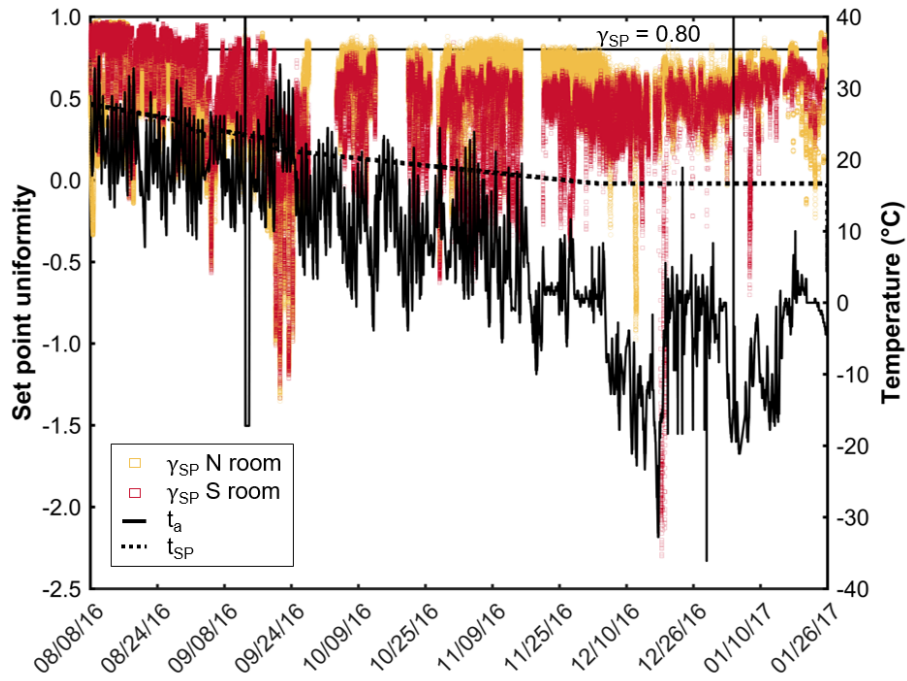


Figure 1. Room set point uniformity over the course of the study.

Analysis of  $\gamma_{SP}$  by  $t_a$  showed the mean N room  $\gamma_{SP}$  was greater for  $t_a < 16^\circ\text{C}$ . For  $t_a > 16^\circ\text{C}$ , except  $24^\circ\text{C}$  to  $32^\circ\text{C}$ , S room  $\gamma_{SP}$  was greater (table 1). Results from the statistical analysis showed a statistically significant difference between N and S room  $\gamma_{SP}$  for  $t_a$  bins  $< 8^\circ\text{C}$  ( $p < 0.01$ ;  $p < 0.01$ ;  $p < 0.01$ ). No statistically significant difference was found between N and S room  $\gamma_{SP}$  for  $t_a$  bins  $> 8^\circ\text{C}$  ( $p = 0.26$ ;  $p = 0.07$ ;  $p = 0.73$ ;  $p = 0.31$ ). These results seem reasonable as the controller can adjust inlet opening and heater run time to maintain set point during colder conditions. At warmer conditions, which often exceed set point, the transitions between power to tunnel can lead to a higher lack of uniformity.

Table 1. Summary statistics for set point uniformity (N room|S room).

	$< -8^\circ\text{C}$	$-8^\circ\text{C}$ to $0^\circ\text{C}$	$0^\circ\text{C}$ to $8^\circ\text{C}$	$8^\circ\text{C}$ to $16^\circ\text{C}$	$16^\circ\text{C}$ to $24^\circ\text{C}$	$24^\circ\text{C}$ to $32^\circ\text{C}$	$> 32^\circ\text{C}$
Mean	0.54 0.38	0.62 0.48	0.59 0.44	0.44 0.52	0.29 0.41	-0.11 -0.10	0.50 0.59
SD	0.20 0.42	0.14 0.22	0.16 0.32	0.30 0.35	0.47 0.48	0.72 0.67	0.13 0.14
Max	0.87 0.87	0.88 0.93	0.97 0.96	0.97 0.97	0.97 0.97	0.97 0.90	0.92 0.69
Min	-0.98 -2.30	-0.23 -1.30	-0.25 -0.43	-0.52 -0.63	-1.20 -1.21	-1.35 -1.33	0.40 0.12
n	30,351	53,135	44,839	56,084	19,144	537	105

## Conclusions

Set point uniformity was better during colder ambient conditions in the North room compared to the South room. This was a preliminary and novel approach to assessing ventilation controller performance. Future work requires the incorporation of the other TE parameters in the performance analysis and their relation to animal thermal balance. An improvement of our understanding of spatiotemporal uniformity and its relation to controller performance is needed. Further, criteria for acceptable uniformity during different modes of controller operation will need to be developed.

## Acknowledgements

This research was supported with funding provided by the Iowa Pork Producers Association under NPB Project 14-242. The authors would like to acknowledge the contributions of visiting scholar Dr. Yun Gao (Huazhong Agricultural University) and undergraduate students Grant Hoppes, Heather Tenboer, and Oluwadurotimi Koya during the preparation and completion of this work.

## References

ASHRAE. (2013). *Handbook of fundamentals*. Atlanta, GA: America Society of Heating, Refrigeration and Air Conditioning Engineers.

- DeShazer, J. A. (2009). *Livestock Energetics and Thermal Environmental Management* (1st ed.). St. Joseph, MI: American Society of Agricultural and Biological Engineers.
- Gao, Y., Ramirez, B. C., & Hoff, S. J. (2016). Omnidirectional thermal anemometer for low airspeed and multi-point measurement applications. *Computers and Electronics in Agriculture*, *127*, 439–450. <https://doi.org/10.1016/j.compag.2016.06.011>
- Mount, L. E. (1968). *The climatic physiology of the pig*. Great Britain: Edward Arnold Publishers Ltd.
- Ramirez, B. C., Gao, Y., & Hoff, S. J. (2016). Development and validation of a spatial and temporal thermal environment sensor array and data acquisition system. In *2016 ASABE Annual International Meeting*. American Society of Agricultural and Biological Engineers.